

# HOW WE WORK

Early Start Family Resource Center (ESFRC) is a community-based service provided by Plumas Rural Services, a non-profit agency.

ESFRC offers FREE services to families of children with disabilities. Services are supported through funding from the California Department of Developmental Services. Services can be stand-alone or coordinated with Far Northern Regional Center, school districts, and other community service providers.



ESFRC services address concerns for children ages 0-3 and transitioning from Early Start to the school district.

This program also works to connect parents and families facing similar challenges to promote social interaction, engagement, and support.



## Serving Plumas County



Cheyenne Tiradeau

(530) 283-2735, ext. 880

Fax: (530) 283-3647

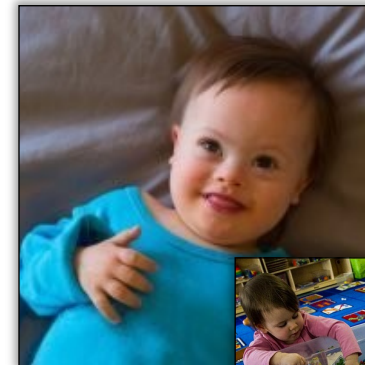
[ctiradeau@PlumasRuralServices.org](mailto:ctiradeau@PlumasRuralServices.org)

Plumas Rural Services' Early Start Family Resource Center program is an equal opportunity service provider and does not discriminate against clients or volunteers on the basis of race, color, religious creed, ancestry, national origin, age, sex (including pregnancy, childbirth or related medical conditions), marital status, sexual orientation, medical

Updated 07/2021



## Early Start Family Resource Center



[www.PlumasRuralServices.org](http://www.PlumasRuralServices.org)

# WELCOME

Early Start Family Resource Center is a service that provides resources and support to families with infants and toddlers age birth to three, who have or are at risk for having disabilities or developmental delays.



You know your child best. We can help you with the rest. Disabilities can include any special needs or challenges, including:

- Physical
- Developmental
- Emotional
- Learning
- Behavioral



# OUR SERVICES

Our Early Start Family Resource Center offers the following:

- Parent-to-parent support with outreach, information, and education resources for families of children with special needs.
- Supporting parents/caregivers with the transition between Independent Family Service Plans (IFSP) from the Regional Center to the Independent Educational Plan (IEP) from the school district.
- Opportunities for parents/caregivers for leadership, input, volunteering, and giving to enhance and support services for children with special needs.

**Serving children ages 0-3  
in Plumas County.**

# OUR GOALS

- Provide helpful trainings, workshops and conferences
- Offer parents and caregivers high-quality resources and information
- Refer families to effective services for parents/caregivers and their children
- Assist families with the transition process as children turn three
- Promote parent-to-parent support to meet practical, emotional and social needs
- Support families in a friendly and helpful manner, ensuring parents and caregivers are truly heard

